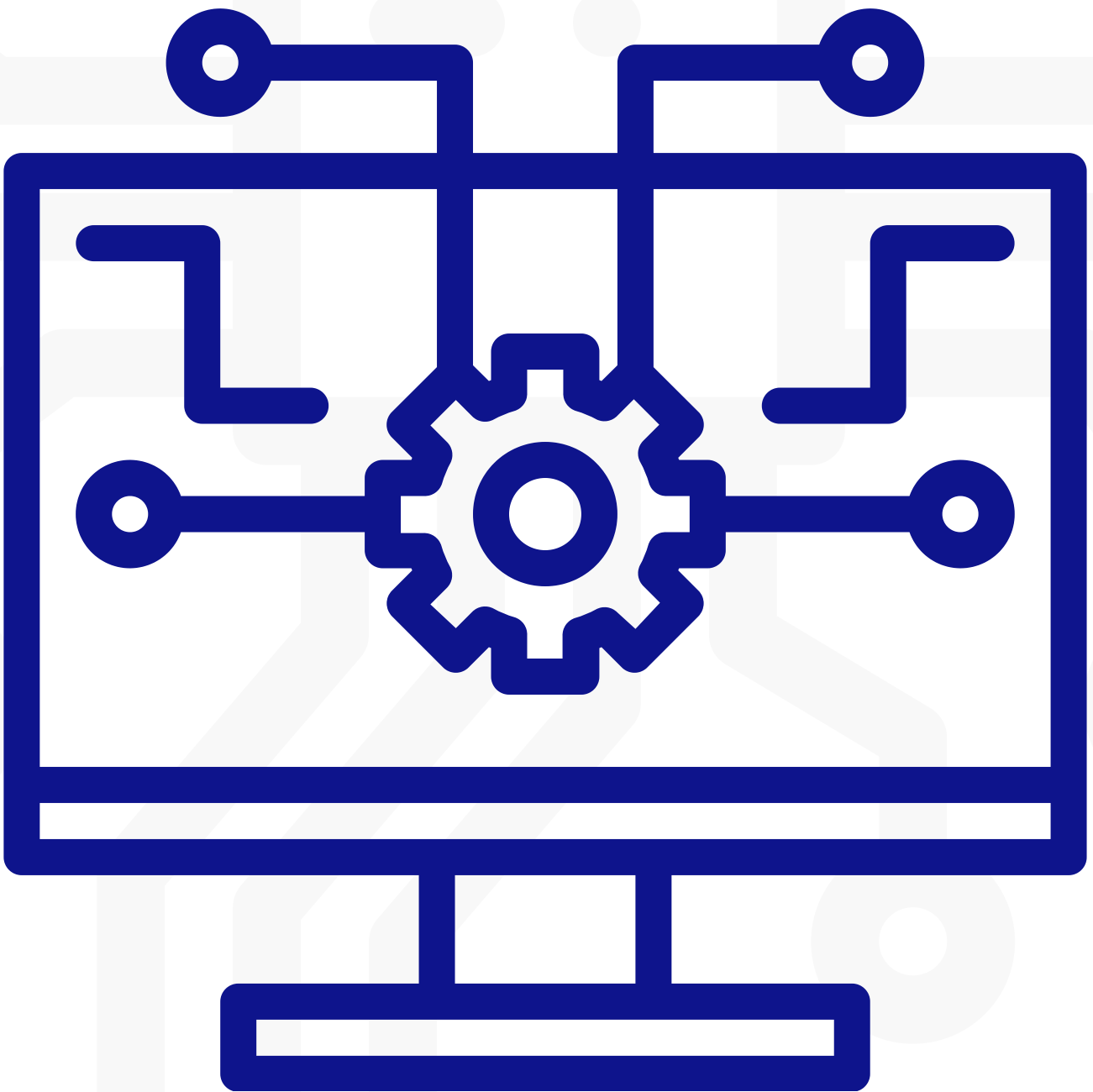


MSc Software **Engineering** (Professional Practice)



Awarded By



This degree is awarded by the University of Greater Manchester and distance delivered online by WINC



Duration

1 Year



Mode of Study

Full Time/Online Delivery with Scheduled Lectures



Credit Value

180 Credits



Assessment

Assignments for each module with live oral presentations



Structure

7 Modules



Support

Study Materials/E-library



OVERVIEW

The MSc in Software Engineering is designed to provide the advanced skills and knowledge you'll need to develop your career in this in-demand global industry. It is a specialised programme for individuals with a computing and programming background, offering advanced training in software methodologies and practical learning through realistic industry scenarios. The course aims to enhance creative thinking, problem-solving, and decision-making skills while preparing students for the demands of the software engineering field, including ethical and environmental considerations.

ABOUT UNIVERSITY OF GREATER MANCHESTER

The University of Greater Manchester, based in Greater Manchester, United Kingdom, is dedicated to delivering excellence in education. With a rich history spanning over 190 years, the university is renowned for its rigorous academics and practical skills development. It prepares students for future careers by offering globally recognised programmes tailored to industry demands.



ENTRY REQUIREMENTS

To apply for the BEng (Hons) Software Engineering (Professional Practice) programme, the following documents and qualifications are required:

- Curriculum Vitae (CV)
- Honours degree (or equivalent) in a computing-related subject
- Proof of identification (ID)
- Completed application form

HOW STUDENTS STUDY

Learning and teaching methods apply a blended style. This may include lectures, seminars, tutorials and critiques, self-directed learning, e-learning and laboratory/workshop sessions, as well as online sessions and support. Practical skills are acquired through technical introduction and support, workshop sessions, demonstrations and activity-based assignments. Active learning is promoted with a strong practical theme, throughout.





QUALIFICATION STRUCTURE

The following modules will be covered in the MSc Software Engineering degree course, carrying a total of 180 credits.

Course Title	Credits	Module Type
Professional Practice	20	Core
Research Methods	20	Core
Contemporary Software Engineering Practices	20	Core
Advanced Software Development	20	Core
DevOps	20	Core
Data Analysis and Visualisation	20	Offered
Project	60	Core

CAREER PROGRESSION

MSc Software Engineering (Professional Practice) graduates swiftly advance their careers with expertise in software development methodologies, technology, and professional ethics. They excel in roles such as software architecture, project management, and technical consultancy, driving innovation and shaping the future of technology



ADVANTAGES To THE STUDENT

No need to 'travel' to class

Attend class when travelling away from the workplace

Recordings always available to review

Greater diversity of currently employed students

Parent university faculty involvement

Re-location/Visa not a problem



RESOURCES TO SUPPORT DELIVERY



Initial joining instructions and support to download and use
Zoom Live



Asynchronous support using Moodle for resources, assignment
hand in (TurnItIn Integral)



Access to online resources - study skills support



Synchronous live delivery of lectures (can be recorded for
future reference)



One to one synchronous office hours



Thorough Induction covering all aspects



PROGRAMME LOGISTICS

Intakes in January, May and September

Admissions close on the date of Induction

Students are issued a University of Greater Manchester Login and ID Number within 4 weeks

Access to Moodle comes with the UoGM Login

Access to Zoom is issued for Induction





WESTERN
INTERNATIONAL
COLLEGE
ONLINE

A CLASS OF ITS OWN - VIRTU@LLY

📍 Office 106, Longcroft House, 2-8 Victoria Avenue, London, EC2M 4NS, UK.

✉ info@wincedu.uk

☎ + 44 020 33931771

📞 + 44 754 7796461

Follow us on Social Media

📘 WincOnlineCampus

📷 winclondon

📌 wincltd

📺 @wincedu

